

EZgate Remote programming via CSD and IP - User Guide

Rev. 4 – 17/04/11



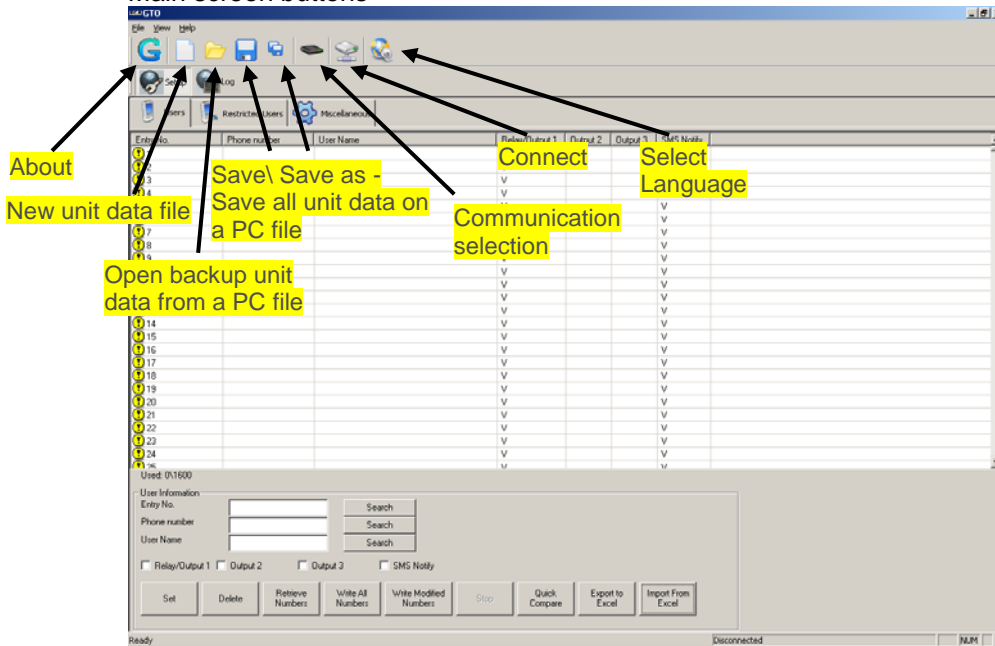
6. Programming the unit

The unit can be programmed in four ways

1. By a computer using data call (CSD connection)
2. By a computer using GPRS connection (over the internet)

6.1 GTO software

Main screen buttons

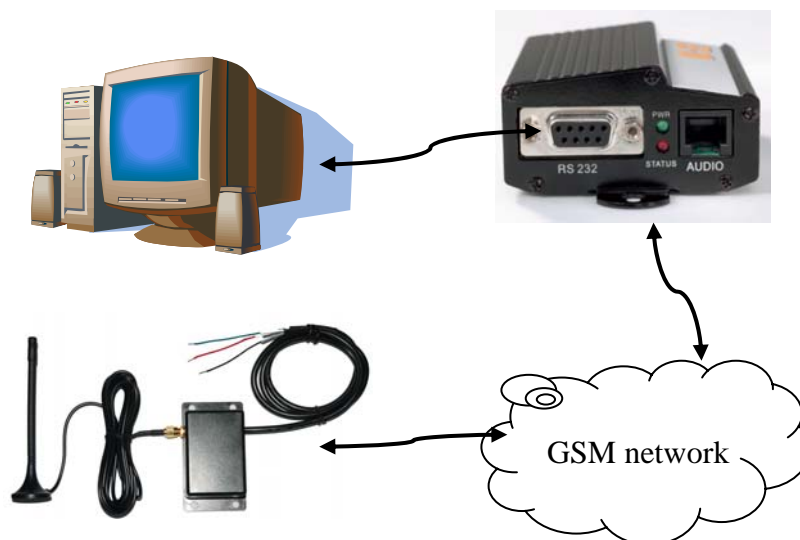


4.1.2 Data call connection (CSD connection)

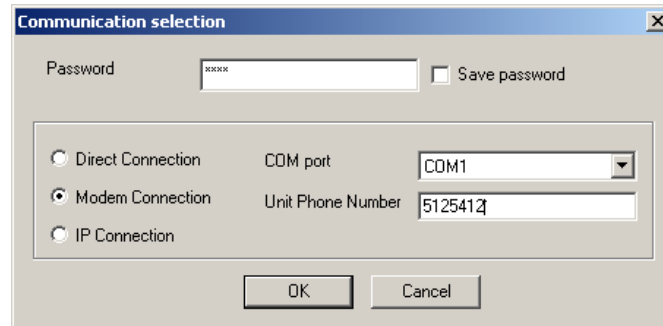
In order to use this option a GSM modem terminal must be used.

Verify with the GSM carrier that both SIM cards (GSM modem terminal and EZgate unit) support data calls.

Connect the GSM modem terminal to the computer with a serial cable.



Open the GTO software and click the “communication selection” button



Select “Modem connection” option, insert the unit password (default password is 1234), select the proper com port, insert the EZgate phone number and press OK.

Click the “connect” button to establish the connection to the unit; it can take up to one minute to establish the communication.

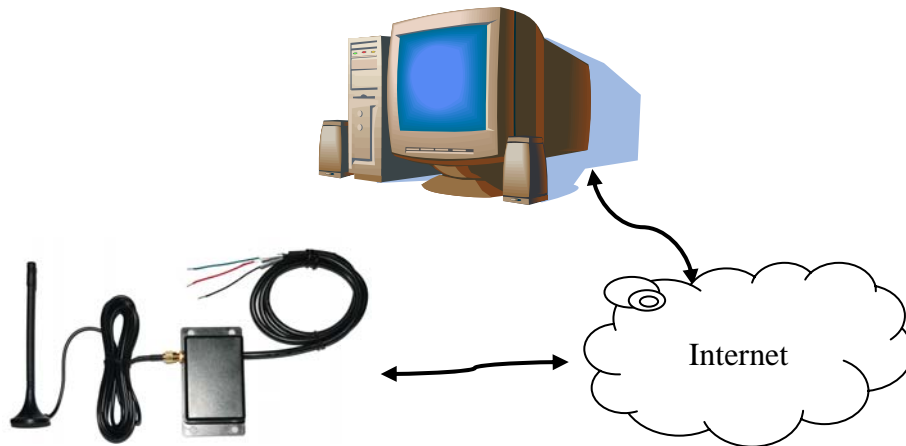
When the communication will be established, the disconnect button will appear.

While connected to the EZgate unit, the green LED will turn off and no incoming calls for access control will be accepted.

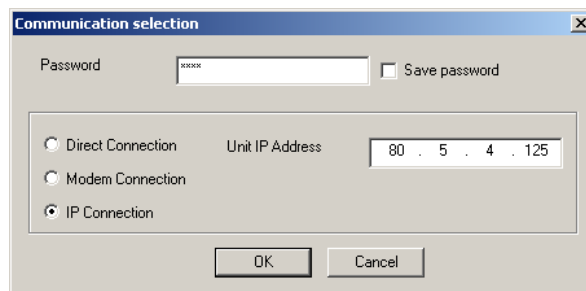
4.1.3 GPRS connection (over the internet)

In order to use this option the EZgate SIM must support GPRS connection and to have **FIX INTERNET IP**.

Before a GPRS connection can be establish with the unit, the GPRS parameters must be set to the unit using direct serial connection, refer to miscellanies screen for more information.



Open the GTO software and click the “communication selection” button



Select “IP connection” option, insert the unit password (default password is 1234), insert the EZgate internet IP address and press OK.

Click the “connect” button to establish the connection to the unit; it can take up to one minute to establish the communication.

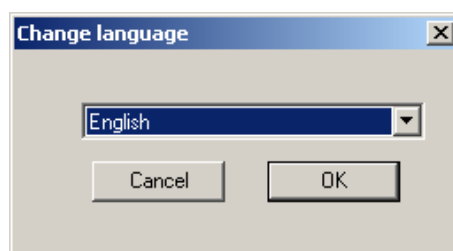
When the communication will be established, the disconnect button will appear.

While connected to the unit, the green LED will turn off and no incoming calls for access control will be accepted.

4.1.4 Change the software language

Click the “Select Language” button, select the wanted language and press OK.

In order the change to take place, the software must be reopened.

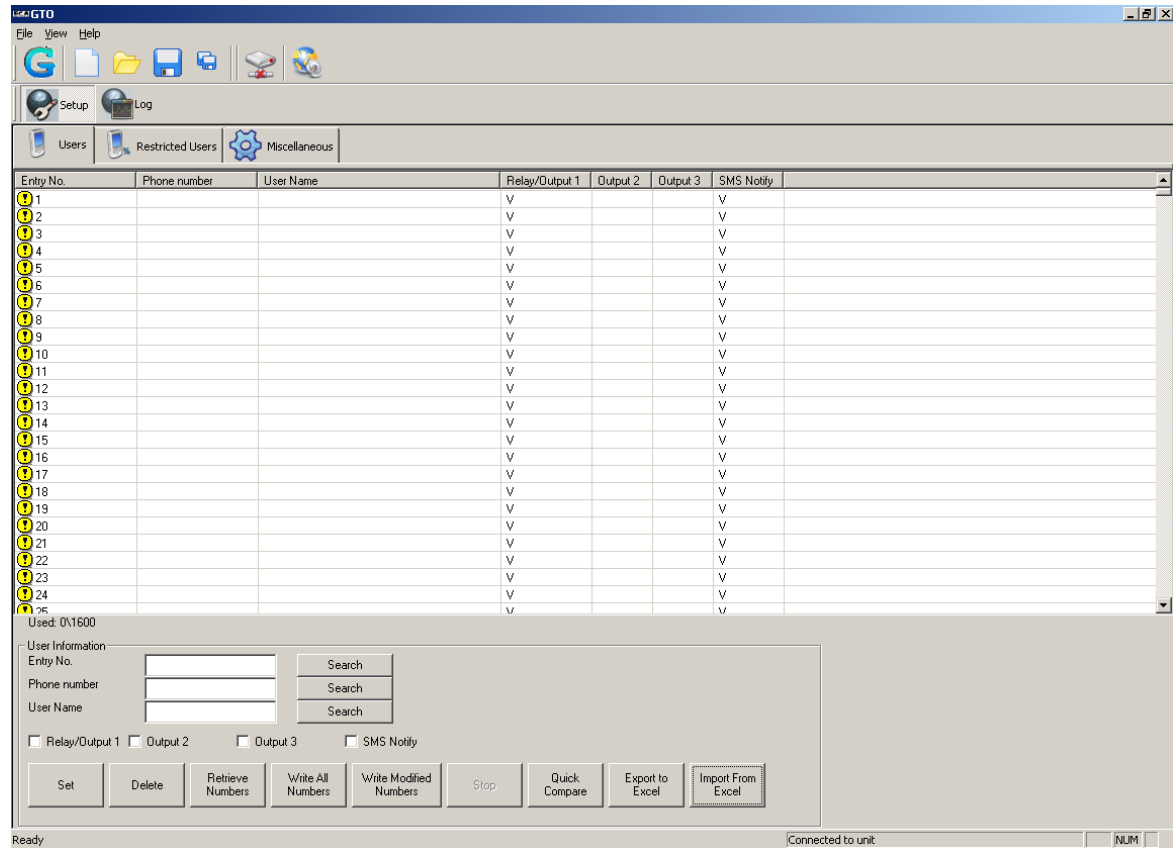


4.1.5 Users screen

Manage the users' white list.

(white list means: the list of phones that allowed to open the gate)

All the descriptions below are enabled only after connecting to the unit.



Get the users list from the GateOpen unit:


1. Click the "Retrieve numbers" button
2. Verification screen will popup, Click "Yes"
3. All the users icons will be changes to
4. Wait until the progress bar will fill
5. All the retrieved users icons will be changed to

Compare the GTO users list with the GateOpen unit users list


1. Click the "Quick compare" button
 2. Wait few seconds
 3. The GTO compares batches of 100 users with the EZgate unit (1-100, 101-200, etc...).
- If one or more user\`s in the batch are different, all the 100 batch users' icons will be changes to .
- If all 100 users in the batch are equal, the users' icons will be changed to .

Add user:

1. Click on an empty user record or enter its entry number in the "Entry No." field
2. Enter the phone number field
3. Enter the user name field
4. Select which outputs the user will activate (Relay/output1)


5. Select if the unit will send SMS notify to the personnel numbers when calling with the "SMS notify" check mark – for more information refer to "Personnel numbers" in the "Miscellaneous screen" section
6. Click the "Set" button, the selected field will fill with the wanted parameters and its icon will be changed to 
7. The changes will not take place until writing them to the unit

Delete user:

1. Click on a user record or enter its entry number in the "Entry No." field
2. Click the "Delete" button, the selected field will fill with empty parameters and its icon will be changed to 
3. The changes will not take place until writing them to the unit



Write the users list to the EZgate unit:

*In this option, the entire user list is being writing to the unit, regardless to the present of the records in the unit.

1. After finishing adding and deleting users from the list, click the "Write all numbers" button
2. Wait for the progress bar to fill, it can take several minutes
3. All the written records icons will be changed to 

Write the modified users list to the EZgate unit:

*In this option, only records that marked with  icon will be written to the unit.

1. After finishing adding and deleting users from the list, click the "Write modified numbers" button
2. Wait for the progress bar to fill, it can take several minutes depends on the number of records marked as 
3. All the written records icons will be changed to 

Stop the current process with the EZgate unit:

The processes of retrieve numbers from the unit, write the entire users list\modified users list to the unit can be stop in the middle by pressing the "stop" button.
The stop procedure may take a few seconds

Export the users' list to Excel file:

The users' list can be export to Excel file using the "Export to Excel" button.

Import the users' list from Excel file:

The users' list can be import from Excel file using the "Import from Excel" button.
The imported file must be a file that been exported from the GTO software, otherwise an error will occur.

In order to import Excel file, export en empty Excel file as a template from the GTO software, change it and import it back to the GTO software.

Search record in the users' list:

A record can be searched by entry number, phone number or partial user name.
Enter entry number\phone number\partial user name in the correct field and press the search button next to it.
If the record exists in the list, it will blink four times.

4.1.6 Restricted users screen

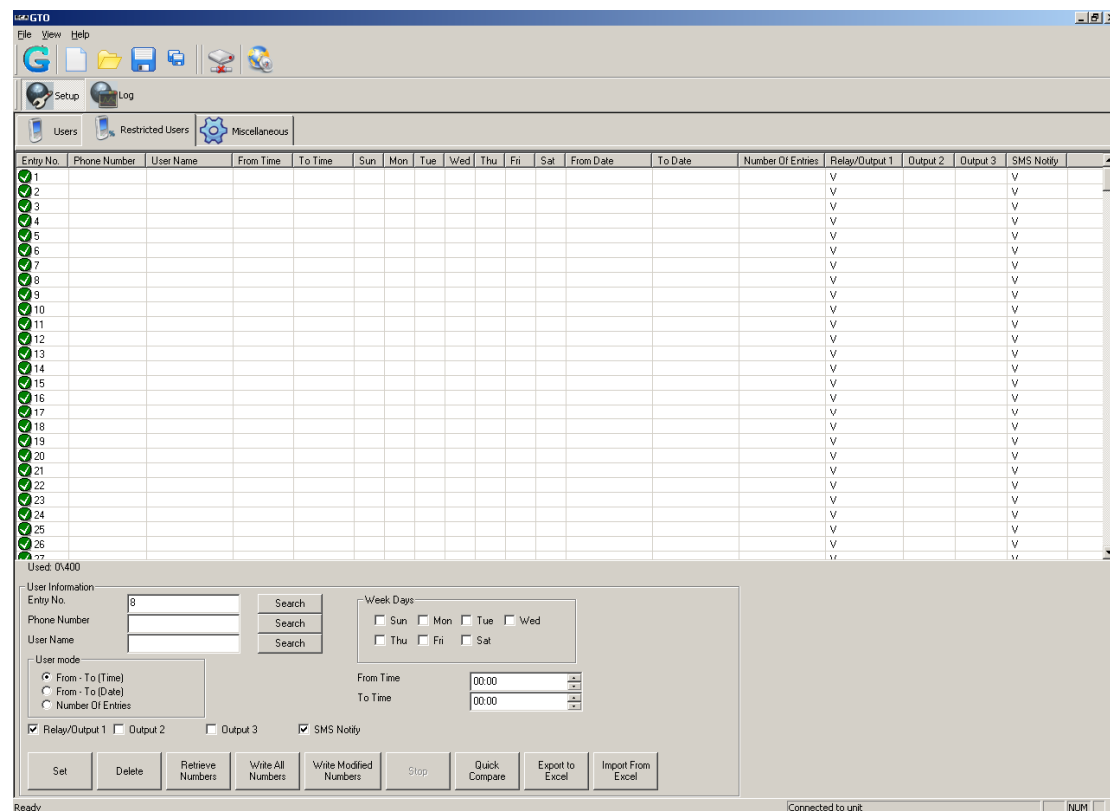
Manage the restricted users' whitelist.

A restricted user is able to activate the outputs in three ways:



1. From time to time in specific week days, e.g. 10:30-15:00 on Sunday and Friday
2. From date to date, e.g. from 05/05/07 08:00 to 06/06/07 23:00
3. Number of entries – the user is restricted for certain amount of activations

* In order that the restricted users will work fine, the unit internal clock must be set, for more information refer to “Unit time” in the “Miscellaneous screen” section.



All the descriptions below are enabled only after connecting to the unit.




Get the restricted users list from the GateOpen unit:

1. Click the “Retrieve numbers” button
2. Verification screen will popup, Click “Yes”
3. All the users icons will be changes to 
4. Wait until the progress bar will fill
5. All the retrieved users icons will be changed to 


Compare the GTO restricted users list with the EZgate unit restricted users list

1. Click the “Quick compare” button
2. Wait few seconds
3. The GTO compares batches of 50 users with the EZgate unit (1-50, 51-100, etc...). If one or more user/s in the batch are different, all the 50 batch users' icons will be changes to .
If all 50 users in the batch are equal, the users' icons will be changed to 

Add restricted user:


1. Click on an empty restricted user record or enter its entry number in the "Entry No." field
2. Enter the phone number field
3. Enter the user name field
4. Select the user mode and enter the user mode parameters
5. Select which outputs the user will activate (Relay\output1, output2\3)
6. Select if the unit will send SMS notify to the personnel numbers when calling with the "SMS notify" check mark – for more information refer to "Personnel numbers" in the "Miscellaneous screen" section
7. Click the "Set" button, the selected field will fill with the wanted parameters and its icon will be changed to 
8. The changes will not take place until writing them to the unit

Delete restricted user:

1. Click on a restricted user record or enter its entry number in the "Entry No." field
2. Click the "Delete" button, the selected field will fill with empty parameters and its icon will be changed to 
3. The changes will not take place until writing them to the unit



Write the restricted users list to the GateOpen unit:

*In this option, the entire user list is being writing to the unit, regardless to the present of the records in the unit.

1. After finishing adding and deleting users from the list, click the "Write all numbers" button
2. Wait for the progress bar to fill, it can take several minutes
3. All the written records icons will be changed to 

Write the modified restricted users list to the EZgate unit:

*In this option, only records that marked with  icon will be written to the unit.

1. After finishing adding and deleting users from the list, click the "Write modified numbers" button
2. Wait for the progress bar to fill, it can take several minutes depends on the number of records marked as 
3. All the written records icons will be changed to 

Stop the current process with the EZgate unit:

The processes of retrieve numbers from the unit, write the entire restricted users list\modified restricted users list to the unit can be stop in the middle by pressing the "stop" button. The stop procedure may take a few seconds

Export the restricted users' list to Excel file:

The users' list can be export to Excel file using the "Export to Excel" button.

Import the users' list from Excel file:

The restricted users' list can be import from Excel file using the "Import from Excel" button. The imported file must be a file that been exported from the GTO software, otherwise an error will occur.

In order to import Excel file, export an empty Excel file as a template from the GTO software, change it and import it back to the GTO software.

Search record in the restricted users' list:

A record can be searched by entry number, phone number or partial user name.

Enter entry number\phone number\partial user name in the correct field and press the search button next to it.

If the record exists in the list, it will blink four times.

4.1.7 Miscellanies screen

Manage the unit parameters.

Unit name:

Retrieve or write the unit name

Unit time:

In order to write the current time to the unit, retrieve the PC time and then write it to the unit. The unit clock will be lost when the power turned off.

Unit password:

Define new password for the unit.
The password is used in the connection selection screen.
Default password is 1234.

Gate delay:

Retrieve or write the gate delay in seconds.
Gate delay defines the time that the outputs will be activated.

Personnel numbers:

The personnel numbers define the phone numbers that will notify by SMS when the unit reject\allow an incoming call.

The unit can hold up to 3 personnel numbers.

Approved user SMS syntax:

Phone number: <Caller ID>
<Gate Open SMS>

<Gate Open SMS> - refers to the "Gate Open SMS"

Rejected user SMS syntax:

Phone number: <Caller ID>
<Gate Reject SMS>

<Gate Reject SMS> - refers to the "Gate Reject SMS" field.

Checking the "Send SMS on approved users":

If an approved user (normal or restricted) calls to the unit, the unit will send the "Approved user SMS" to the personnel numbers if the user has the "SMS notify" option in its record.

Checking the "Send SMS on disapproved users":

If a disapproved user (not in the normal\restricted lists or restricted user that is not allowed at the moment) calls to the unit, the unit will send the "Rejected user SMS" to the personnel numbers.

Automatic clock update - SMS:

If enabling this feature, the unit sends to itself SMS on startup and updates its internal clock according to the SMS time stamp.

Unit Phone Number – The phone number of the EZgate unit.

Band selection:

Retrieve\write the GSM band according to the country GSM support

Version:

Retrieve the EZgate unit firmware version.

Signal level:

Retrieve the GSM signal level.

Open everyone:

If enabling this feature, the unit will activate the relay (output1) for every phone number that is calling to the unit, regardless to the users list.

